

## Classic



The Classic collection furnishes the office space with high-backed executive seating, managerial and meeting seating with fixed feet and stools, featuring an understated design and luxury covers, with a choice of eight catalogue finishes, fabric and leather, in numerous colour versions. The frame, in chromed steel or matte black coated, also has a base with five spokes available in matte black aluminium and gloss aluminium finishes.

### Projects

**Crédit Lyonnais**, Villejuif, France (2011)

**Paroc**, Vilnius, Lithuania (2012)

**NRS Media**, Londra, United Kingdom (2012)

**PTC**, Dublino, Ireland (2017)

**Epsilon**, Parigi, France (2017)

**Vittoria Assicurazioni**, Catania, Italy (2019)

**Bane Nor**, Oslo, Norway (2019)

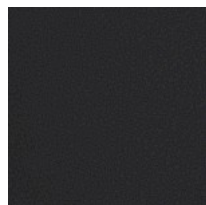
**FOMO Business and Meetings**, Sandnes, Norway (2021)

## Models

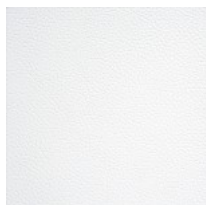
Executive		
Manager		
Meeting		
Visitor chair sled base		

## Materials and colours

### Upholstery



Leather TS - Florida / Dani  
Available colours 12



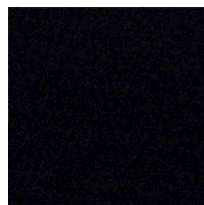
Leather PA - Panama / Dani  
Available colours 13



Leather SX + Coated fabric NX  
Available colours 12



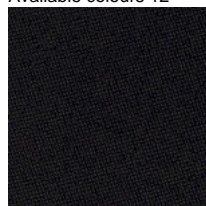
Fabric SY - Sinergy / Camira  
Available colours 6



Fabric IP - Ipanema D / Pugi  
Available colours 11



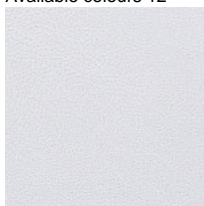
Fabric ME - Medley / Gabriel  
Available colours 13



Fabric CH - Chili / Gabriel  
Available colours 13



Fabric CS - Crisp / Gabriel  
Available colours 13



Coated fabric SC - Secret / Flukso  
Available colours 12

**Questo prodotto è garantito 5 anni.** Sitland Spa si riserva di apportare modifiche e/o migliorie di carattere tecnico ed estetico ai propri modelli e prodotti in qualsiasi momento e senza preavviso. Le foto e i colori visualizzati sono puramente indicativi e possono variare rispetto alla realtà. Per maggiori informazioni si prega di contattare il nostro Servizio Clienti [service@sitland.com](mailto:service@sitland.com)